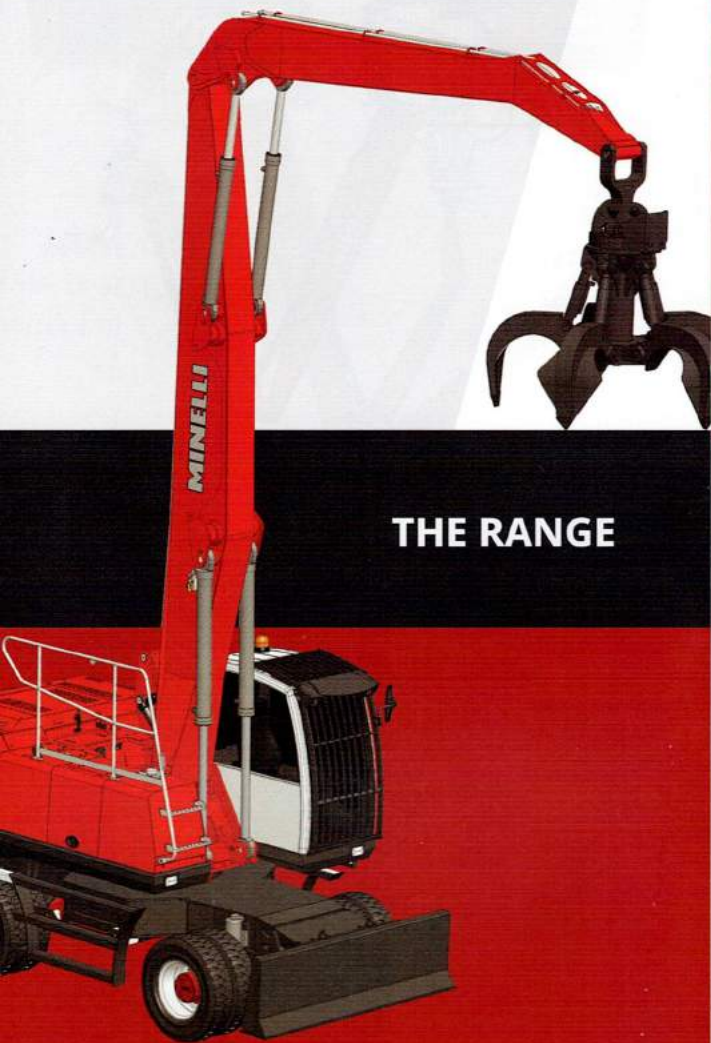




**MATERIAL HANDLERS
MADE IN ITALY**



THE RANGE

www.officineminelli.it



Product specifications are subject
to change without notice or obligation.



OFFICINE MINELLI s.r.l.

Via Padana Superiore, 1
25046 Cazzago San Martino (BS) - ITALIA
Tel. +39 030 725012 r.a.
Fax +39 030 7254518
info@officineminelli.it



www.officineminelli.it

M15

-  6.5 m
-  12-14 ton
-  75 kW



M15.65

-  7.4 m
-  12-14 ton
-  75 kW



M15

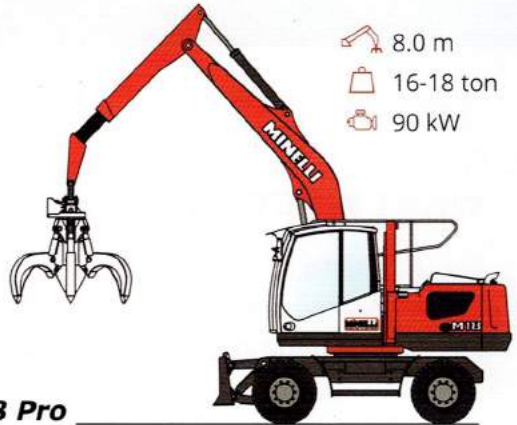
-  7.4 m
-  12-14 ton
-  75 kW



M15 Pro

M18

-  8.0 m
-  16-18 ton
-  90 kW



M18 Pro

-  8.0 m
-  16-18 ton
-  90 kW



M18 Fix

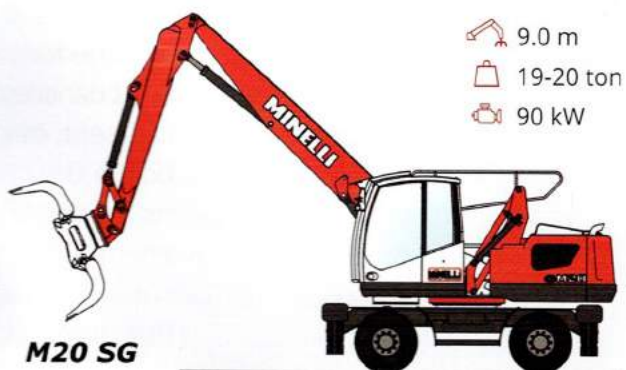
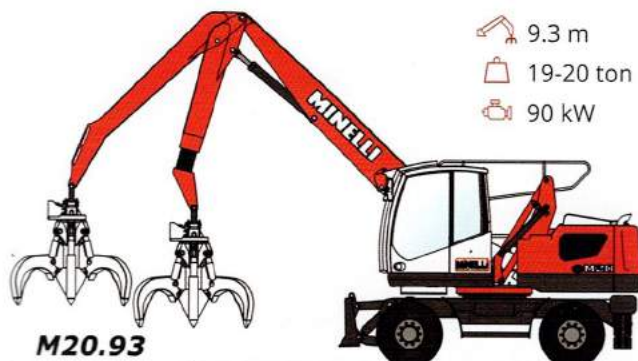
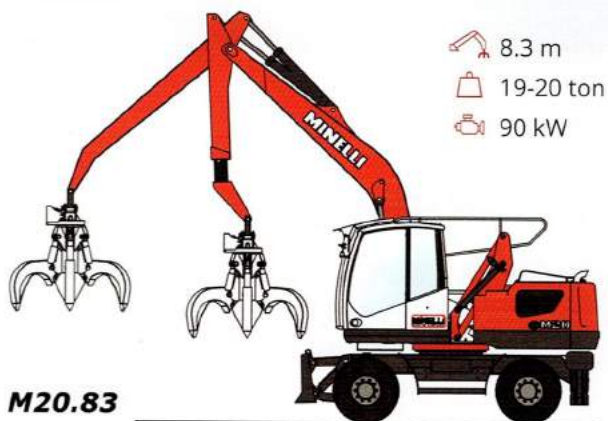
-  7.5 m
-  16-18 ton
-  90 kW



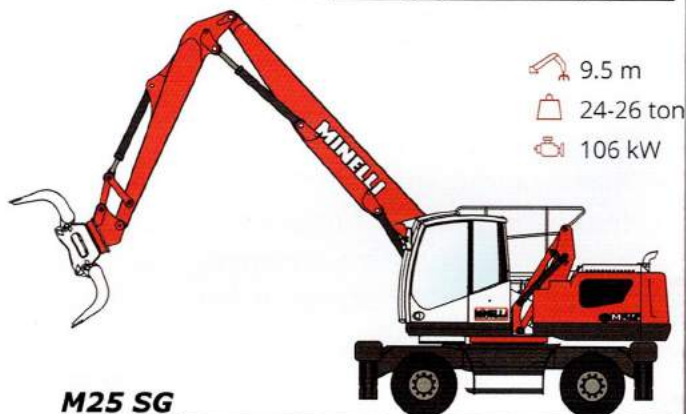
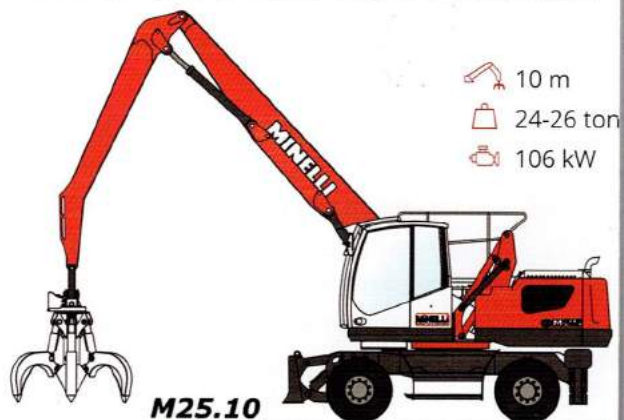
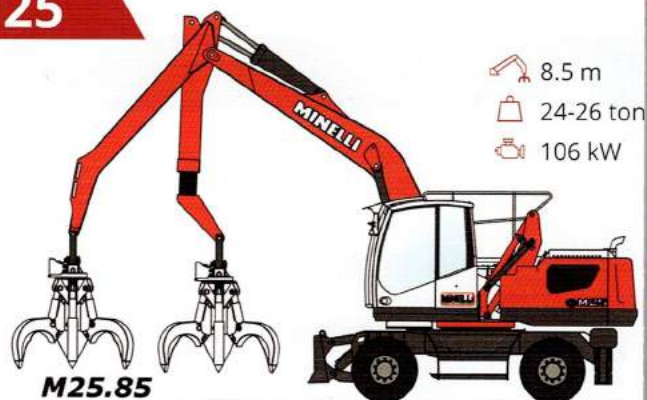
M18 SG

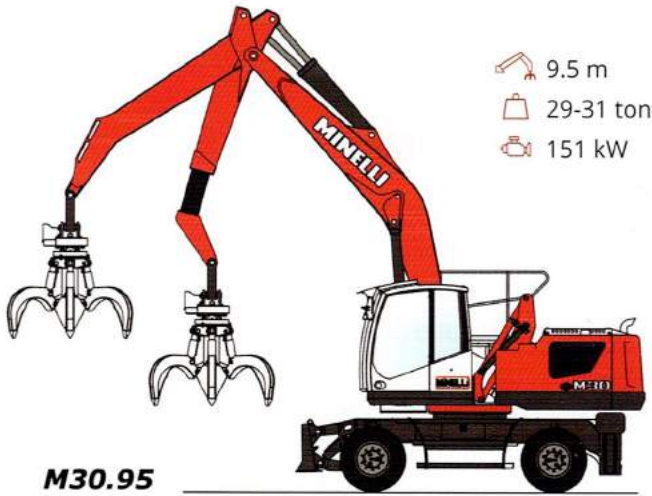


M20



M25





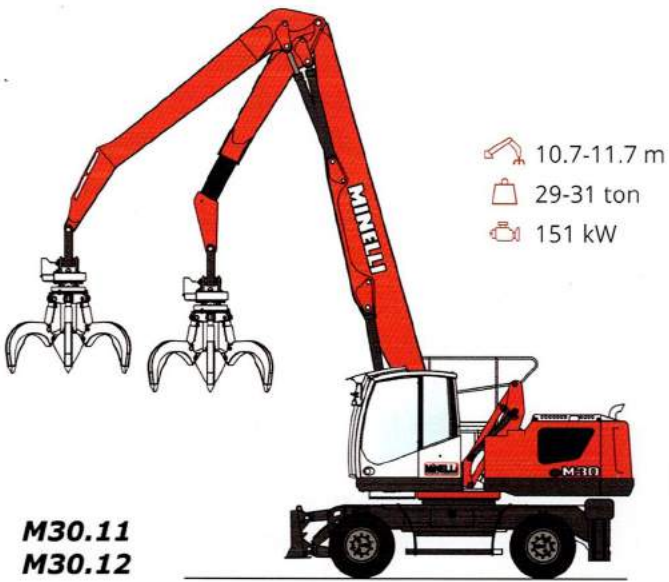
- 9.5 m
- 29-31 ton
- 151 kW

M30.95



- 11 m
- 29-31 ton
- 151 kW

M30 Vario



- 10.7-11.7 m
- 29-31 ton
- 151 kW

M30.11
M30.12

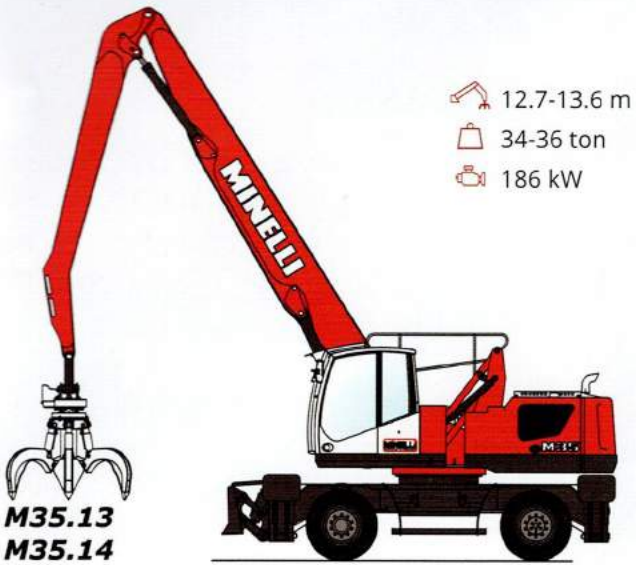
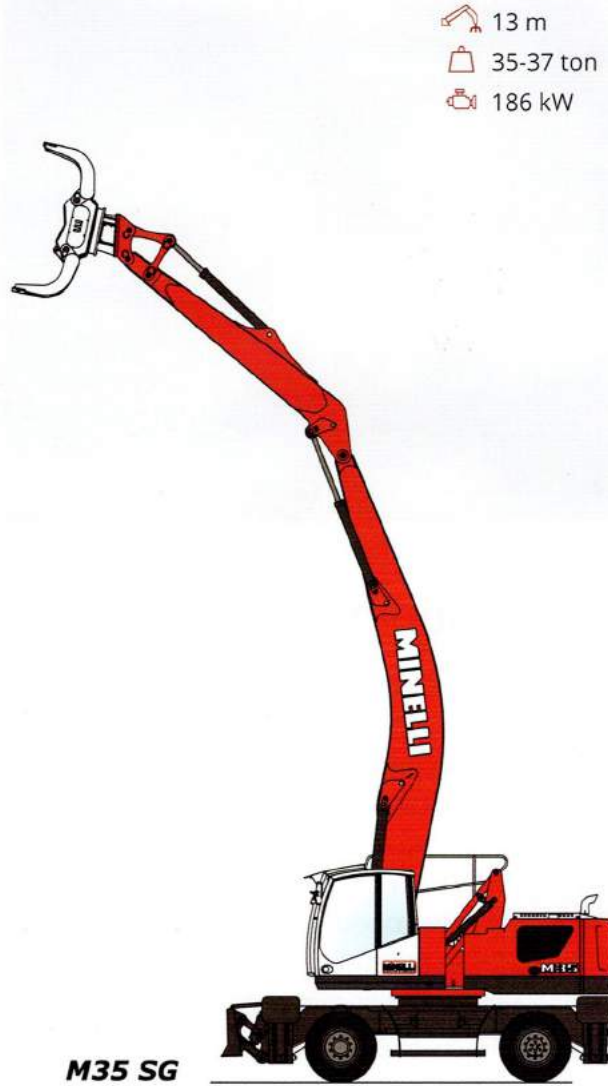
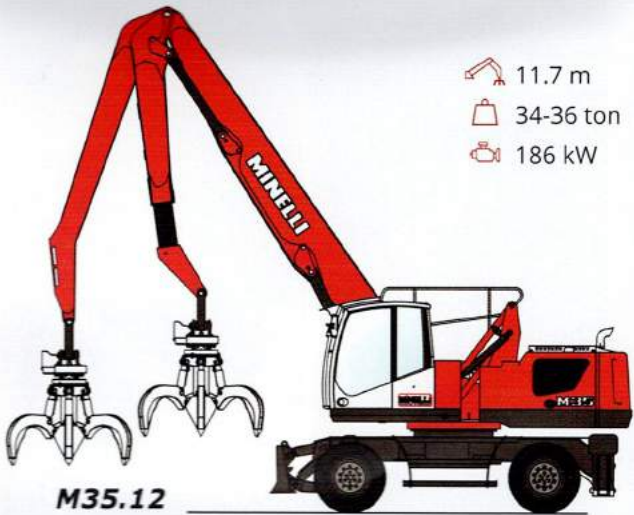


- 11 m
- 29-31 ton
- 151 kW

M30 SG



M35

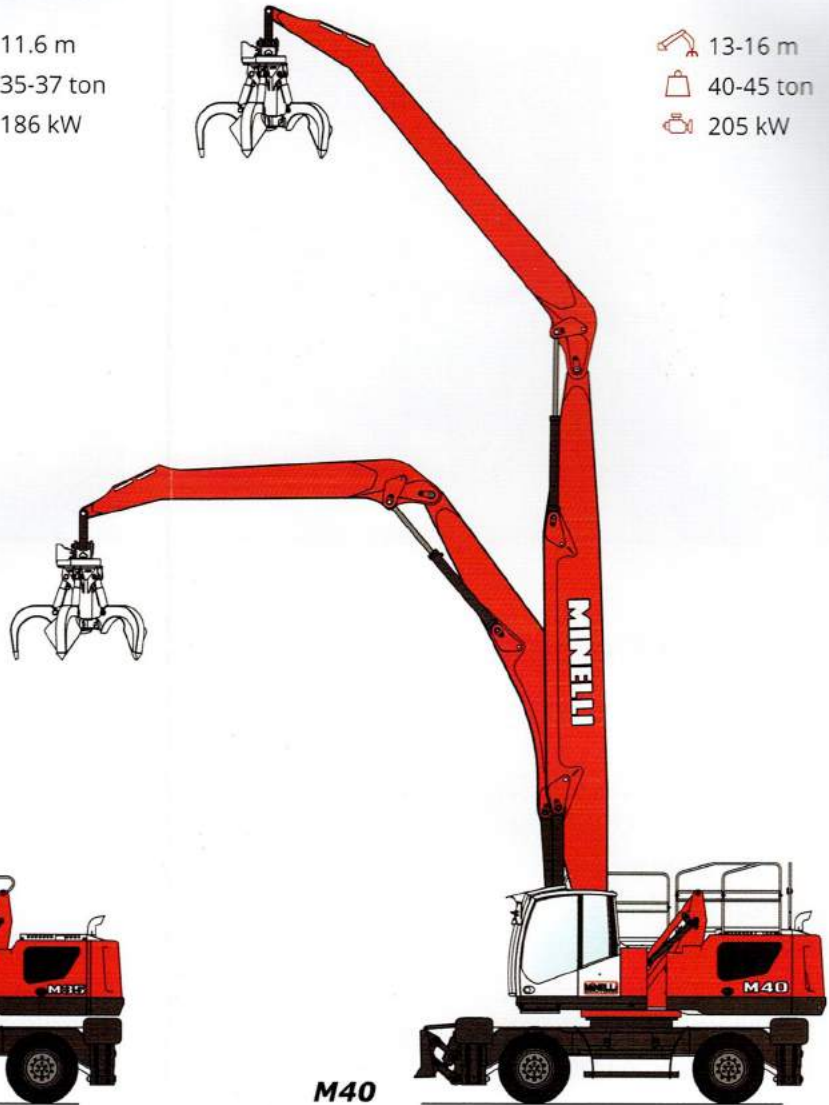
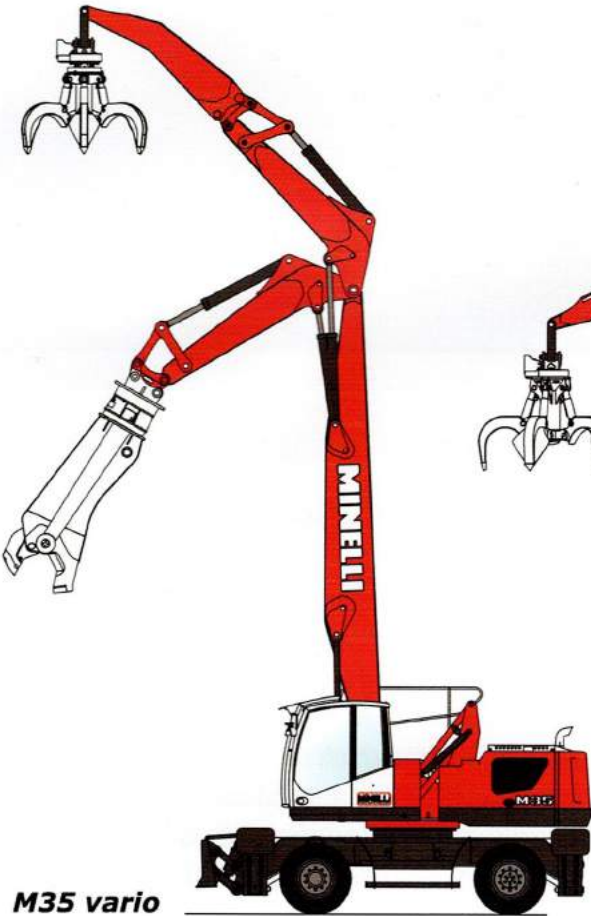


M40

M45

-  11.6 m
-  35-37 ton
-  186 kW

-  13-16 m
-  40-45 ton
-  205 kW





EFFICIENZA

Grazie a idraulica ed elettronica all'avanguardia le macchine Minelli hanno prestazioni ottimali in termini di velocità, robustezza e stabilità.

EFFICIENCY

Thanks highest quality hydraulics and electronics, Minelli machines guarantee high performance in terms of speed, strength and stability.

EFFIZIENZ

Dank modernster Hydraulik und vernünftiger - auf Minimum gehaltener - Electronic verfügen unsere Maschinen über ein optimales Zusammenspiel in Punkto Geschwindigkeit, Feinfühligkeit und Kraft. Ausgezeichnete Stabilität, Tragfähigkeit und präzise Arbeitszyklen wurden somit optimal erreicht.



AMBIENTE ED ECONOMIA

- Sistema idraulico LSSC con elettronica = risparmio sino al 20% di carburante;
- Trattamento dei gas di scarico conforme alle ultimissime normative;
- Coordinamento ottimizzato tra motore e impianto idraulico tramite linea Can-Bus;
- Massima protezione dal rumore.

ENVIRONMENT AND ECONOMY

- LSSC hydraulic system with electronics = fuel savings of up to 20%;
- Treatment of exhaust gases in compliance with the latest regulations;
- Optimized coordination between engine and hydraulic system via Can-Bus line;
- Maximum noise protection.

UMWELT U. WIRTSCHAFTLICHKEIT

- LSSC-Hydrauliksystem mit Elektronik = Kraftstoffeinsparung von bis zu 20%;
- Moderne Abgasnachbehandlung entspricht den neuesten Vorschriften;
- Optimierte Abstimmung zwischen Motor und Hydraulik (über die Can-Bus-Linie);
- Maximale Schallschutzmaßnahmen.



CABINA

- Climatizzazione automatica;
- Visibilità a 360° grazie all'ampia superficie vetrata;
- Comandi disposti ergonomicamente, intuitivi e di facile attivazione;
- Bassa rumorosità grazie isolamento acustico possibile;
- Sedile di guida con sospensioni pneumatiche;
- Scatola di raffreddamento ad alta efficienza, con maglie anti-intasamento;
- Schermo 7" a colori con info macchine e spia di sicurezza.

CABIN

- Air conditioning;
- 360° visibility;
- Ergonomically arranged, intuitive and easy controls unit;
- Low noise;
- Air suspensioned driver' seat;
- High efficiency cooling box, with anti-clogging knitwear;
- 7" color screen for all machines info + safety indicators lights.

WOHLFÜHL-KABINE

- Klimaautomatik;
- Beste Rundumsicht;
- Ergonomisch angeordnete Bedienungselemente;
- Geräuscharm dank bestmöglicher Schalldämmung;
- Luft gefederter Komfort-Fahrersitz;
- Kühlbox mit Anti-Verstopfungsgriffe;
- 7" color screen mit Maschineninfo und Sicherheitsleuchten.



MANUTENZIONE

- Sistema di lubrificazione centralizzato automatico;
- Accesso facile e sicuro a tutti i componenti;
- Opzioni diagnostiche facili e veloci;
- Facile accessibilità a tutti i punti di servizio.

MAINTENANCE

- Centralized lubrication system;
- Easy-access to all components;
- Quick diagnostic;
- Easy accessibility all service points.

EINFACHE, KOSTENOPTIMIERTE WARTUNG

- Automatische Zentralschmieranlage;
- Leichter und sicherer Zugang zu allen Komponenten;
- Leichte und schnelle Diagnosemöglichkeiten;
- Leichte Erreichbarkeit und Zugänglichkeit aller Servicestellen.



SICUREZZA

- Componentistica che soddisfa gli standard più elevati;
- Sistema di allarme di sovraccarico acustico e visivo (fornisce costantemente informazioni di carico);
- I dispositivi di protezione contro la rottura dei tubi (block valve, safety-valve) sono installati di serie.
- Limitazione geometrie bracci, area di lavoro.

SAFETY

- All devices meet the highest standards;
- Acoustic and visual overload alarm system (it provides updated loading info);
- Pipe break protection devices (block-valve, safety-valve) supplied as standard;
- Arm geometries restriction, working area as standard.

SICHERHEIT

- Komponenten, die den höchsten Standards entsprechen;
- Akustische und visuelle Überlastwarnsysteme liefern ständig die notwendigen Informationen der aktuellen Belastungssituation an den Bediener;
- Rohrbruchsicherungen (Block Valve- Safety valve) serienmäßig verbaut;
- Begrenzung der Armgeometrien, Arbeitsbereich als Standard.

EN

WHAT WE DO

For over half a century we design and build with passion Material Handlers for junkyards for the handling, loading and unloading materials of all kind.

Our vehicles are used every day in the recovery and the reprocessing of materials (scrap iron and metal, paper, plastics, waste, organic material, mud), in demolition and industrial demolition, in the chain of metallurgy and steel industry (for the handling of scrap, scraps or semi-finished products), leather industry, as part of the forest industry (for log handling in sawmills or shearing industries, derivatives for paper mills, wood to be chipped, for the production of pellets or simply to move firewood) or rail and port logistics in general: sand, gravel, coal, mineral, mud, grain and everything in bulk form or full, solid or semi-solid can be gathered raised, moved and stored with a grapple, a clamp, a clamshell bucket, an equipment or from a hook properly sized.



OUR PRODUCT RANGE

Our range constantly changing and updating, today includes loaders from 12 metric tons of weight with outreach of 6.5 meters to the 45 metric tons with 16 m outreach total.

The availability in the design of special models for the diverse needs of lifting and handling equipment continues to be a sign of experience and dynamism of our technicians are always ready to face new challenges.